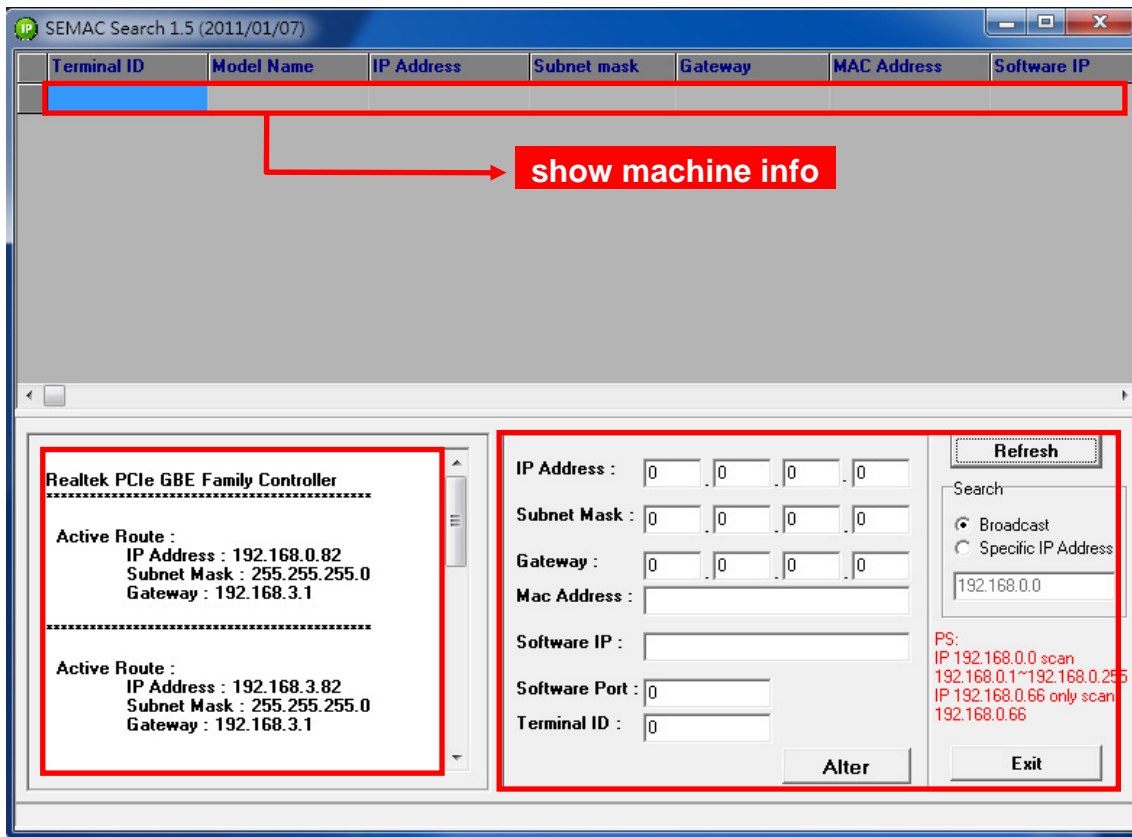


SEMAC Search Software Manual

1. Software Interfaces



【Fig. 1】

I . Left side of Fig 1:

Realtek PCIe GBE Family Controller: Displays the NIC model No. on the device.

Active Route: Displays the current settings

IP Address: IP address

Subnet Mask: Subnet Mask

Gateway: Default Gateway

II . Right side of Fig 1:

Refresh: The refresh button

Search: Search for all IP or a specified IP

Broadcast: Broadcast Search all IP

Specific IP Address: Search for a specific IP

For example: Enter 192.168.0.71 to search for this IP only, enter 192.168.0.0 to search through 192.168.0.1 to 192.168.0.255

Alter: Confirm to modify

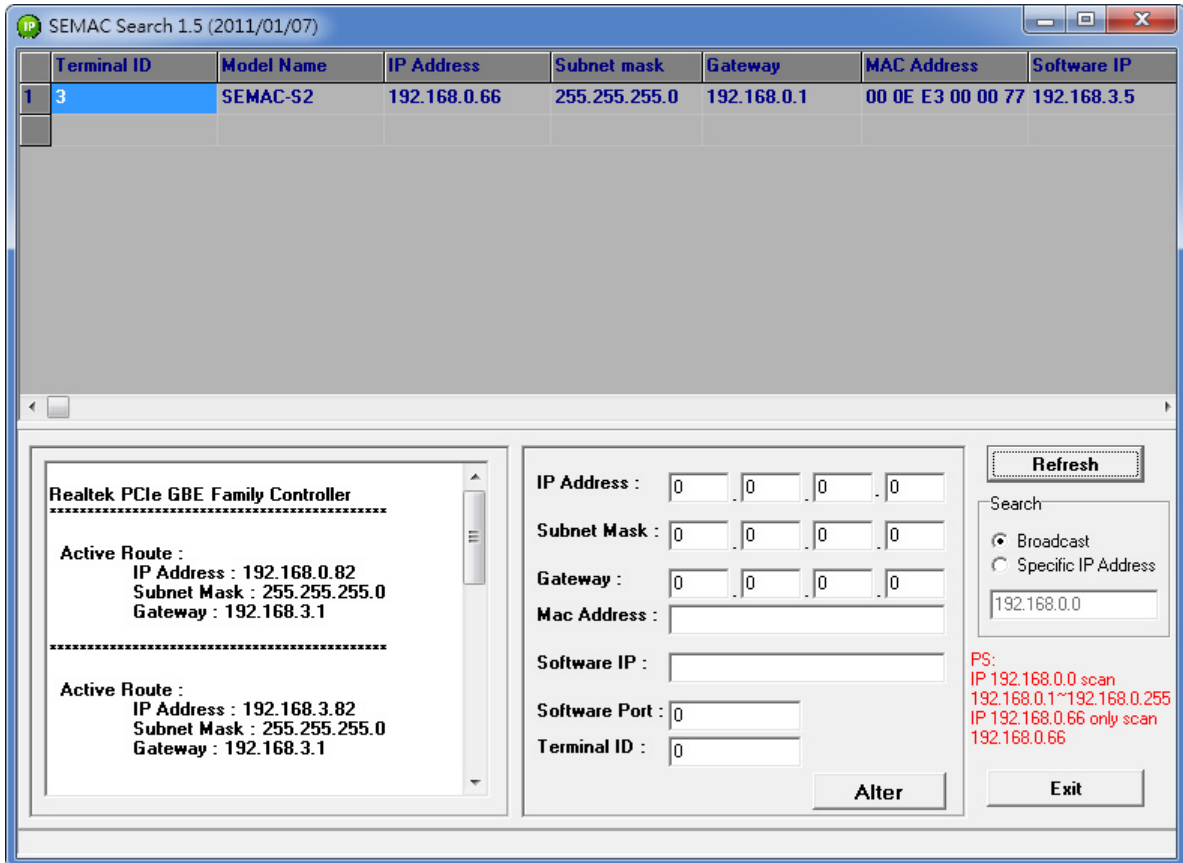
Exit: Exit

Available products: **SEMAC, WebPass**



2. How to use SEMAC Search

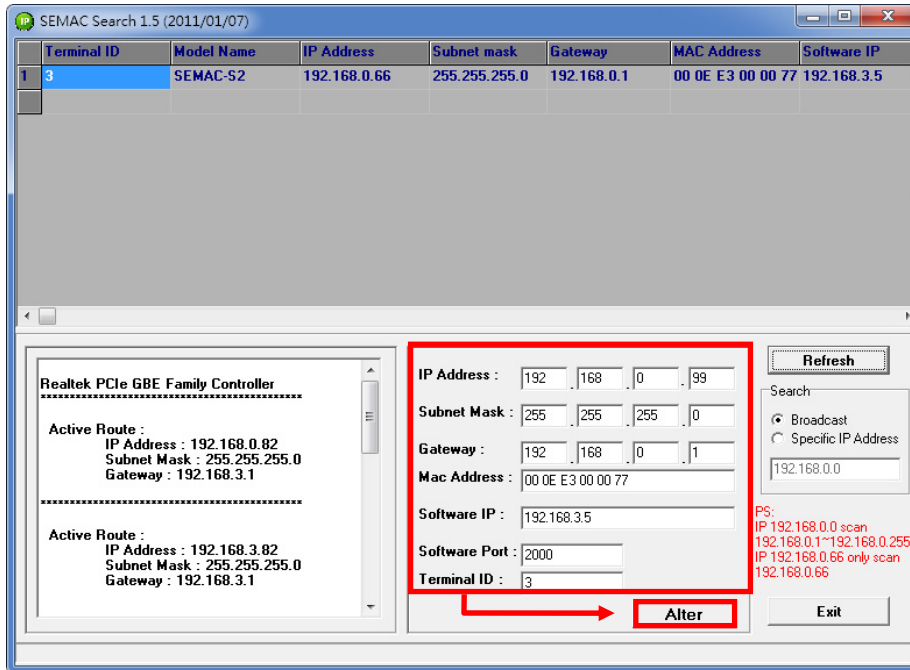
Double click SEMAC Search icon on your desktop ; then click Refresh button to search for SEMAC or WEBPASS devices available on network. Any device found will be displayed with its Model Name, IP Address, Subnet mask, Gateway, MAC Address, Software IP, Software Port and Terminal ID in the window, as shown in **【Fig. 2】** .



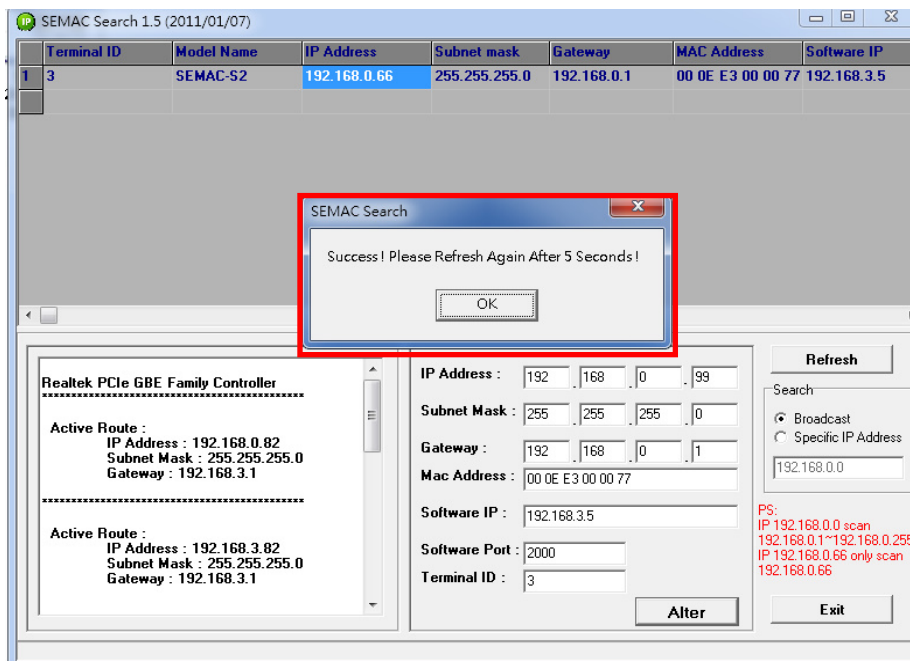
【Fig. 2】

3. How to use SEMAC Search to modify settings

Click SEMAC Search and select any device found; enter new settings for IP Address, Subnet Mask, Gateway, Software IP, Software Port and Terminal ID, and then click Alter button. A message column will pop up to inform you that the settings have been successfully modified. Click "OK" to close the message column, and complete the setting modification, as shown in 【Fig. 3-1 & 3-2】 .

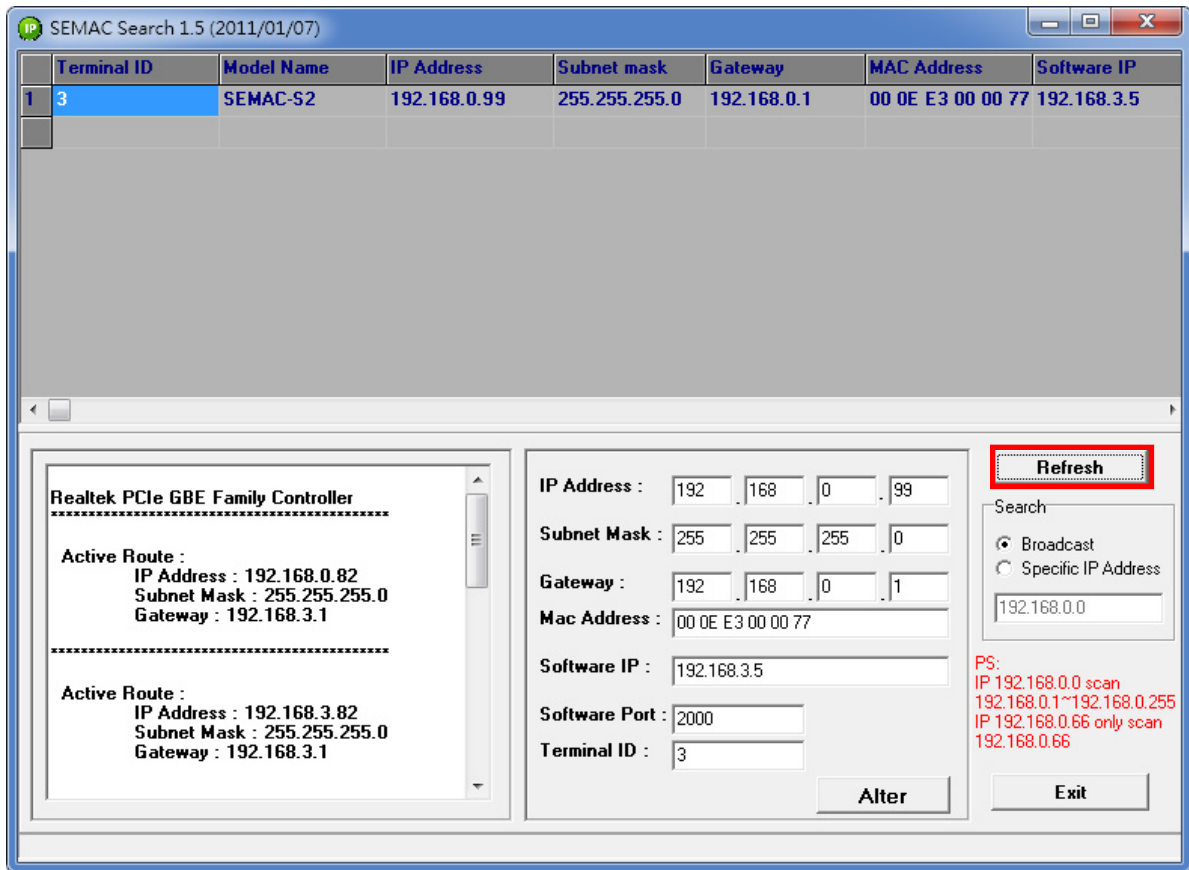


【Fig. 3-1】



【Fig. 3-2】

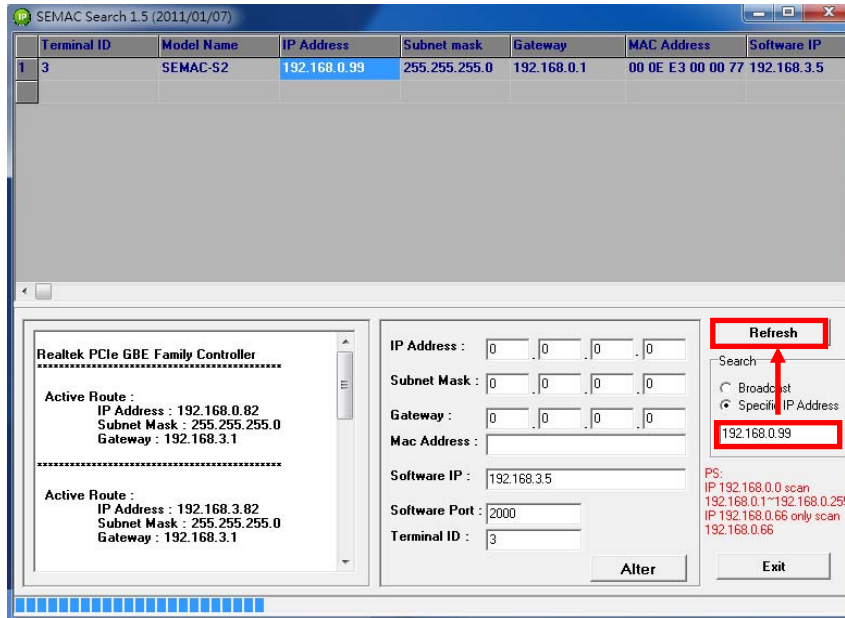
Press "Refresh" to search again. The modified IP address, subnet mask, default gateway, software IP, software Port and terminal ID will appear in the window, as shown in 【Fig. 4】 .



【Fig. 4】

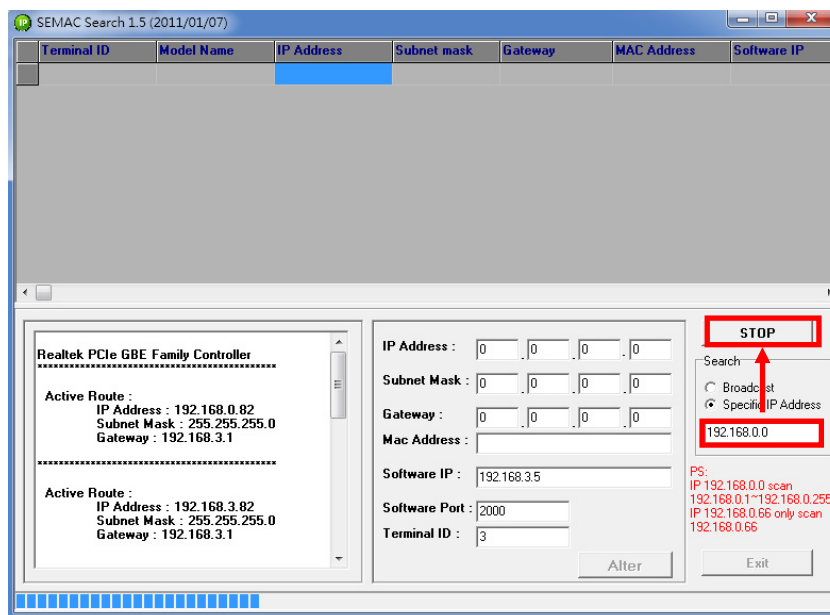
4. Searching device with a specific IP

To search for one device with specified IP address, click Specific IP Address at the bottom right corner and enter the IP address; click Refresh button to search for the device on that IP address, as shown in **【Fig. 5】**.



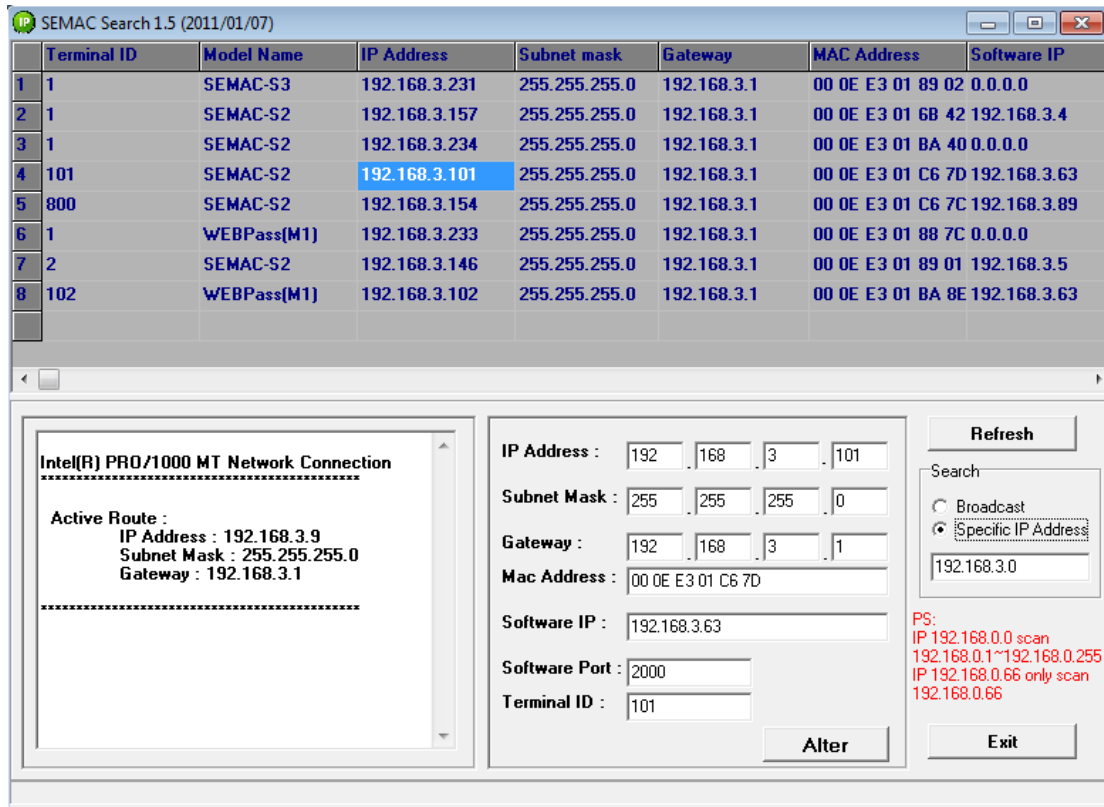
【Fig. 5】

To search for the specified IP segment, click Specific IP Address and specify the segment (e.g. enter 192.168.0.00) Click “ Refresh “ to search for all devices in the selected segment through 192.168.0.0 ~192.168.0.255, as shown in **【Fig. 6】**.



【Fig. 6】

When the search is complete, it will display all the SEMAC and WEBPASS found. Double click the device to open its webpage where you can enter user name and password for setting, as shown in **【Fig. 7】**.



【Fig. 7】